

Sliding Sash

Our traditional Timber Sliding Sash Window is available in a range of glazing options to suit local requirements, with the option of spring balances or traditional weights and pulleys.

Made on our state of the art CNC machine to ensure the sashes are perfectly square and accurately sized – a must for smooth operating Sliding Sash Windows.

As with all of our Casement Windows our Timber Sliding Sash Windows are made from FSC approved, sustainably sourced Hardwood Red Grandis or Redwood Softwood as standard. All opening sashes are made from engineered wood as standard with solid timber used for the frames. Due to the cill being in an exposed position from the weather, a popular choice for our Sliding Sash Window is Softwood with a Hardwood cill, giving a cost saving over a purely hardwood product. Other materials such as Accoya are available on request

Glass as standard is low emissive soft coat, with warm edge spacer bar and argon filled cavity. All our timber windows can be supplied, glazed or unglazed to suit your requirements. Other glass specifications are available to meet specific needs, contact one of our team for more information.

Traditional hardware options for locking and sliding sash lifts for operation are available in brass and chrome. Operating poles for taller hard to reach sash windows are available in a number of styles. We have even incorporated our Sliding Sash windows in our Timber Conservatories and Orangeries.



OUTSTANDING DURABILITY

Accoya® wood's durability (rot resistance) is Class 1, matching and even exceeding the performance of nature's most durable woods such as Oak, Teak, Iroko and Sapele. Every batch of Accoya® wood is tested after production to ensure that its durability can be guaranteed.

The Accoya® advantage:

- Joinery that will stand the test of time and not require replacement for at least 60 years**
- Use in demanding external applications, even in fresh water
- Beauty, elegance and style - natural or coated

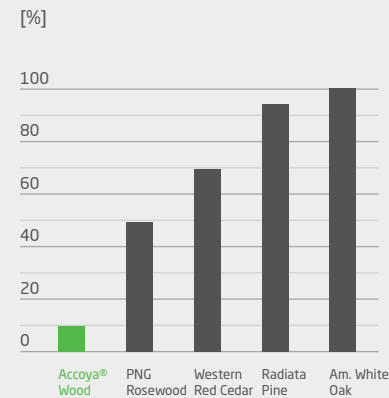
SHEET PILING



Acetylated Poplar * Unmodified Wood

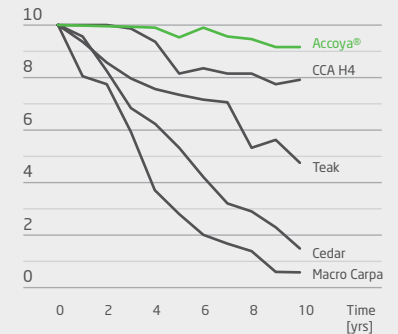
After 10 years in fresh water

TERMITE MASS LOST TEST



Mastotermes darwiniensis is the most destructive species of Australian termite and active north of the Tropic of Capricorn. Hazard Class 3 above ground testing was set up in Northern Territory, Australia according to the AWPA protocol by the Australian Forest Research Company.

OUTDOOR STAKE TEST



Based on ASTM D 1758. Decay rates in outdoor stake test range from 0 (failed) up to 10 (no decay or insect damage)



NORTH LONDON WINDOWS LTD.

Unit 14, Chingford Industrial Centre
Hall Lane, Chingford
London E4 8DJ

Office: 0208 345 6008
Sales: 0208 884 3300
Email: quotes@northlondonwindows.co.uk

www.northlondon-windows.co.uk

* Accoya® wood is made using a modification process called acetylation | ** In use classes 1, 2 and 3 as defined in EN335-1 © Accsys Technologies December 2016. Accoya and the Trimarque Device are registered trademarks owned by Titan Wood Limited, a wholly owned subsidiary of Accsys Technologies PLC, and may not be used or reproduced without written permission.



innovation in wood



DIMENSIONALLY STABLE

Accoya® wood's superior dimensional stability (resistance to swelling and shrinkage) exceeds all commonly used species, including Teak, Sapele and Iroko. Accoya® wood has been tested over prolonged periods in all types of weathering conditions - above ground, below ground and even in water - and has been proven to withstand even the toughest of external environments.

The Accoya® advantage:

- Reduced swelling and risk of jamming in humid conditions
- Better fitting windows and doors in all weathers
- Less frequent coatings maintenance

TRADA TRIAL RESULTS

Accoya® wood was the only wood that did not cup in this TRADA** trial on wooden cladding.



REDUCED SWELLING

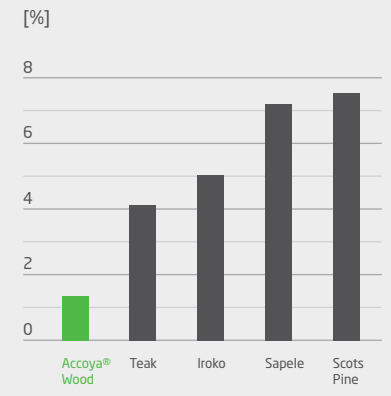
Acetylated wood*



Unmodified wood



TANGENTIAL SHRINKAGE



Typical tangential shrinkage from fully soaked to oven dry - the most extreme laboratory test.



NORTH LONDON WINDOWS LTD.

Unit 14, Chingford Industrial Centre
Hall Lane, Chingford
London E4 8DJ

Office: 0208 345 6008
Sales: 0208 884 3300
Email: quotes@northlondonwindows.co.uk

www.northlondon-windows.co.uk

* Accoya® wood is made using a modification process called acetylation
** Timber Research and Development Association www.trada.co.uk
© Accsys Technologies December 2016. Accoya and the Trimarque Device are registered trademarks owned by Titan Wood Limited, a wholly owned subsidiary of Accsys Technologies PLC, and may not be used or reproduced without written permission.



PERFECT
FOR COATING

Accoya® wood has shown improved coating lifetime performance with many types of coatings, resulting in extended maintenance intervals. The light colour of Accoya® wood allows for a wide range of colour finishes. Improved stability means film-forming coating systems last up to two times longer. Accoya® wood is easier to coat, less preparation and sanding is required.

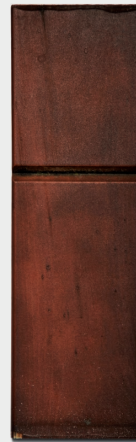
The Accoya® advantage:

- Potential for less frequent coatings maintenance
- Cost savings during the life of the product
- Environmental benefits during the life of the product
- Wider range of colour and coatings options

COATING COMPARISON AFTER 13 YEARS OUTDOOR EXPOSURE

Translucent WB Acrylic Coating

Acetylated wood*

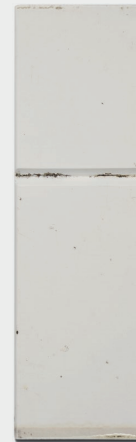


Unmodified wood



Opaque WB Acrylic Coating

Acetylated wood*



Unmodified wood



TRADA COATING TEST

42 months outdoor exposure

Pine

Accoya® wood



Accoya® wood outperformed pine boards showing excellent coating performance.



NORTH LONDON
WINDOWS LTD.

Unit 14, Chingford Industrial Centre
Hall Lane, Chingford
London E4 8DJ

Office: 0208 345 6008
Sales: 0208 884 3300
Email: quotes@northlondonwindows.co.uk

www.northlondon-windows.co.uk



SUSTAINABLE CHOICE

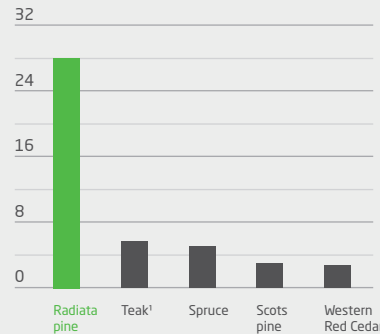
By significantly enhancing the durability and dimensional stability of fast growing, abundantly available certified wood species, Accoya® wood provides compelling environmental advantages over scarce slow growing hardwoods, woods treated with toxic chemicals, and non-renewable carbon-intensive materials such as plastics, steel and concrete.

The Accoya® advantage:

- Always sustainably sourced from abundantly available, often fast growing wood species
- Use phase advantages: increased life span, less maintenance, superior thermal insulation
- Non toxic and 100% recyclable - a perfect fit with the bio-cycle of the C2C philosophy
- CO₂ negative over the full life cycle

ANNUAL YIELD

[m³ / ha / year]

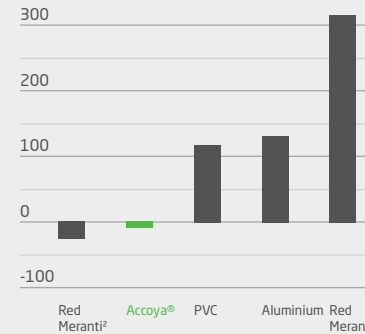


Annual yield comparison of species in cubic meters of wood produced per hectare per year

¹ Plantation grown

CARBON FOOTPRINT

[kg CO₂ eq / window frame]



Greenhouse gas emissions (cradle to grave) in kg CO₂ eq per window frame in various material alternatives

² Sustainably sourced
³ Unsustainably sourced

ECOLABELS

Accoya® wood has been awarded various accreditations and eco-certifications further highlighting its unique sustainability properties.



LEEDv4: MR1, MR2, MR3, MR4 I1
BREEAM: MAT 1, MAT 5

Read more on www.accoya.com/sustainability




NORTH LONDON
WINDOWS LTD.

Unit 14, Chingford Industrial Centre
Hall Lane, Chingford
London E4 8DJ

Office: 0208 345 6008
Sales: 0208 884 3300
Email: quotes@northlondonwindows.co.uk

www.northlondon-windows.co.uk