



Multi-Pane

Designed and Manufactured in the UK

Technical Data Sheet V.1-2024

 Manufactured in the UK

 15 Year Warranty*

 Industry Leading Weather Testing

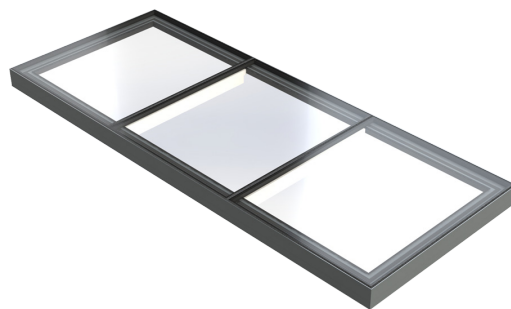
 U-Values as Low as 0.5 W/m².K

 Marine Grade Powder Coating

 Concealed Fixings

Key Features & Benefits

- Multi panel: keep adding modules for infinite length rooflights
- Free spanning up to 4.5m: any span available with intermediate supports
- Various glazing bar designs available
- Various glazing bar shrouds available
- Hinged sections for ventilation available
- Hinged sections for access available
- Fully thermally broken aluminium frame prevents cold bridging, reducing the risk of condensation
- Excellent thermal performance, with total system U Values as low as 0.5 W/m².K achievable
- Quick and easy to install
- Cover cap for concealed fixings
- Designed to be installed on all roof pitches and roof types
- Recommended minimum kerb pitch of 5° to help shed water
- Minimal framework: daylight is maximised while the visible framework is minimised
- More daylight = less artificial light = energy savings
- BIM Objects
- NBS Specification documents
- Product CAD drawings



- Install guides
- More daylight leads to enhanced well-being

Frame Specification

- The Skyway Multi-Pane Flat Glass rooflight frame is manufactured from extruded aluminium section to BS 1474, EN 12020-1:2001
- Polyamide thermal break to BS EN ISO 16396-2:2017 making the frame fully thermally broken and extremely thermally-efficient
- Polyester Powder Coated Aluminium to BS EN 12206-1:2004
- RAL Colours: Anthracite Grey (RAL 7016) Matt and Black (RAL 9005) Matt as standard options
- Bespoke RAL colour options also available, Matt finish as standard
- Marine Grade Polyester Powder Coating as standard
- Colour matched glazing bar bolts as standard

Glass Specification

Hermetically sealed Double Glazed – IGU:

Outer: Heat Soak Tested Toughened glass

Cavity: Argon filled with Swisspacer warm edge spacer + silicone bonded for a fully UV resistant edge seal



Inner: Laminated or Heat Soak Tested Toughened Glass + Soft Coat Low-E for excellent thermal efficiency

- For even better thermal efficiency, bespoke glass with ultra-low U Values is available to special order
- Triple & Quadruple Glazed IGU's with hermetically sealed glass, and optional painted or sandblasted perimeter borders are available upon request

Product Testing & Certification

- Non-Fragility: CWCT TN66 & TN67 or CWCT TN92
- Non-Fragility CWCT Class 1 Certified
- Non-Fragility CWCT Class 2 Certified
- Extensive in-house testing
- AA Fire-rated: AA Designation (National Class) or Broof (T4) European Class
- Weather tested to CWCT Class A4 & Class R7
- Certisecure STS202 BR2

Critical Kerb External Dimensions = Rooflight Order Size

Min. Kerb Height: 150mm (at the eaves end)

Max. Size: Dependent on glass specification

Min. Recommended Kerb Pitch: 5° to shed water

Bespoke Glass Options

- Solar Control
- Privacy Glass
- Body Tinted Coloured Glass
- Acoustic Laminate
- Easy-Clean Coatings (Ritec)
- CUin Advanced Thermal Performance
- Triple Glazed
- Quadruple Glazed
- Switchable Privacy Glass
- Heated anti-condensation Glass
- Integral Blind within cavity of glass IGU - zero maintenance
- Blind under glass or in lightwell
- Paint or Sandblast borders
- Low Iron Glass
- Artwork manifestations
- Company logo manifestations

British Standards Compliance

- BS 6375-1: 2015+A1:2016 Weathertightness
- BS EN 1026:2016 Air Permeability
- BS EN 1027: 2016 Watertightness
- BS EN 12211: 2016 Wind Resistance
- BS EN 12206-1:2004: Polyester Powder Coating

- BS EN ISO 16396-2:2017 Thermal Break
- BS 1474, EN 12020-1:2001 Extruded Aluminium Sections
- BS EN 14351-1: 2006 + A2: 2016 Window Performance
- BR443: 2019 Conventions for U Value Calculations

Rooflight Performance

- Building Regulations (E&W) Approved Document L compliant design to achieve low U Values
- U Values: As low as 0.5 W/m².K
- G-values: As low as 0.19
- Light Transmission: Up to 79.1%
- Thermal Modelling by Winlso
- FEA Structural analysis by Solidworks 3D
- Flat Glass Protect+ Rooflights Part Q compliant

Design Loadings

Snow: 640 N/m²

Wind: 750 N/m²

Other loads to be specified by Client

Product Variations

- Multi-pane
- Walk-on
- Square
- Rectangular
- Circular
- Elliptical
- Triangular
- Hexagonal
- Pentagonal
- Octagonal
- Totally bespoke shapes
- Wall abutment to up to three sides
- Flat Glass Protect+ Doc Q compliant
- Timber kerb

Rooflight Cleaning & Maintenance

Flat Glass rooflights can be supplied with an Easy-Clean Coating, the Ritec ClearShield system provides an efficient solution to greatly reduce the need for cleaning.

'Non-stick', Easy-Clean rooflight protection provides:

- Reduced cleaning time, effort, and frequency
- Keeps rooflights looking like new, staying cleaner for significantly longer
- Resists glass staining and contamination from tree sap, bird droppings, traffic pollution and general dirt
- Helps to maintain Window Energy Ratings



NORTH LONDON
WINDOWS LTD.

